

**Robex**

# 300LC-9S

**Long Reach Excavator**

HYUNDAI

Moving you further

Engine	Cummins C8.3-C
Operating weight	33,250kg (73,300 lb)
Bucket capacity (SAE)	0.52m <sup>3</sup> (0.68yd <sup>3</sup> )
Max. reach on ground level	18,400mm (60' 4")
Max. digging depth	14,820mm (48' 7")
Travel speed	3.2 to 5.3 km/hr (1.3 to 3.3 mph)

**Long Reach Front Includes :**

Boom, Arm, Linkage, Bucket, Cylinders (boom, arm, and bucket), Hydraulic lines, and Additional counterweight for stability.

Designed especially for river maintenance and settling pond rehabilitation in plants.

The extended range front attachments give all the advantages of a hydraulic excavator plus an exceptional long reach range.

**Relief valve setting**

Implement circuits	350 kgf/cm <sup>2</sup> (4,980 psi)
Travel	350 kgf/cm <sup>2</sup> (4,980 psi)
Swing circuit	300 kgf/cm <sup>2</sup> (4,270 psi)
Pilot circuit	40 kgf/cm <sup>2</sup> ( 570 psi)
Service valve	Installed

**Hydraulic cylinders**

No. of cylinder - bore X stroke

Boom : 2 - 140 X 1,465 mm (5.5" X 57.7")

Arm : 1 - 150 X 1,765 mm (5.9" X 69.5")

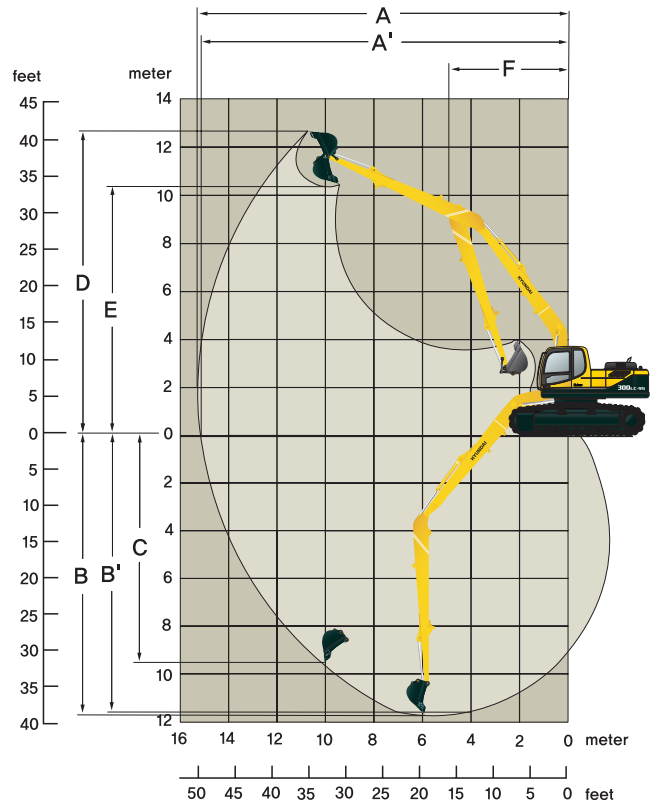
Bucket : 1 - 100 X 870 mm (3.9" X 34.3")

**Digging force**

Bucket digging force	(SAE)7,100 kgf [70.0kN] (15,650 lbf)
	(ISO)8,200 kgf [80.0kN] (18,080 lbf)
Arm crowd force	(SAE)4,800 kgf [47.1kN] (10,580 lbf)
	(ISO)4,900 kgf [48.1kN] (10,800 lbf)

**Working ranges**

	Boom length	10,200mm (33' 6")
	Arm length	7,850mm (25' 9")
A	Max. digging reach	18,510mm (60' 9")
A'	Max. digging reach on ground	18,400mm (60' 4")
B	Max. digging depth	14,820mm (48' 7")
B'	Max. digging depth (8' level)	14,690mm (48' 2")
C	Max. vertical wall digging depth	12,020mm (39' 5")
D	Max. digging height	14,500mm (47' 7")
E	Max. dumping height	12,190mm (40' 0")
F	Min. swing radius	6,250mm (20' 6")

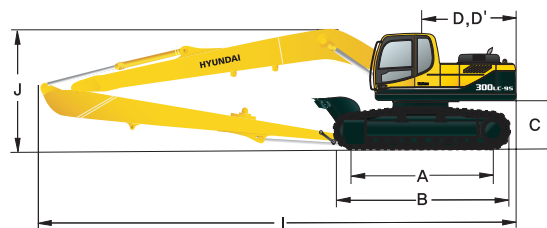
**Operating weight (approximate)**

Operating weight, including 10,200mm (33' 6") Boom, 7,850mm (25' 9") Arm, SAE heaped 0.52m<sup>3</sup> (0.68yd<sup>3</sup>) backhoe bucket, and 800 mm (32") triple grouser shoe, additional counterweight lubricant, coolant, and full fuel tank, Hyd. tank and the standard equipment.

Upperstructure weight	7,600kg (16,760 lb)
Attachment weight	5,920kg (13,050 lb)
Operating weight	33,250kg (73,300 lb)
Drawbar pull	27,300kgf (60,200 lb)
Ground pressure	0.48 kgf/cm <sup>2</sup> ( 6.83 psi)

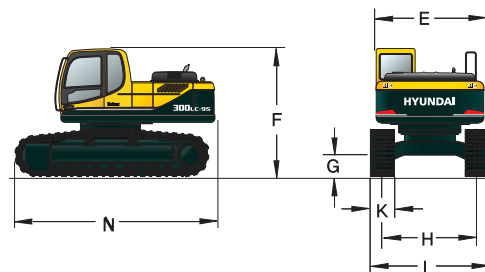
## Shipping dimensions

A	Tumbler distance	4,030mm (13' 3")
B	Overall length of crawler	4,940mm (16' 2")
C	Ground clearance of counterweight	1,190mm (3' 11")
D	Tail swing radius	3,345mm (11' 0")
D'	Rear-end length	3,265mm (10' 9")
I	Overall length	14,695mm (48' 3")
J	Overall height of boom	3,550mm (11' 8")



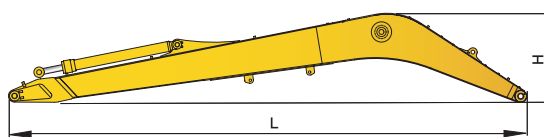
## Base machine

E	Overall width of upperstructure	2,980mm (9' 9")
F	Overall height of cab	3,010mm (9' 11")
G	Min. ground clearance	500mm (1' 8")
H	Track gauge	2,600mm (8' 6")
K	Track shoe width	800mm (32")
L	Overall width	3,400mm (11' 2")
N	Overall length	5,740mm (18' 10")
	Weight	27,330kg (60,250 lb)



## Long reach boom

L	Overall length	10,410mm (34' 2")
H	Overall height	1,675mm (5' 6")
W	Overall width	900mm (3' 1")
	Weight	3,420kg (7,540 lb)



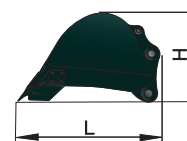
## Long reach arm

L	Overall length	9,010mm (29' 7")
H	Overall height	870mm (2' 10")
W	Overall width	480mm (1' 7")
	Weight	1,690kg (3,730 lb)



## Bucket

L	Overall length	1,400mm (4' 7")
H	Overall height	820mm (2' 8")
W	Overall width	1,035mm (3' 5")
	Weight	460kg (1,010 lb)



## Lifting capacity

Rating over-front Rating over-side or 360 degree

Boom : 10.2m (33' 6") / Arm : 7.85 m (25' 9") / Bucket : 0.52m<sup>3</sup> (0.68 yd<sup>3</sup>) SAE heaped / Shoe : 800mm (32") triple grouser

Load point height	Load radius														At max. reach			
	6.0m (20ft)		7.5m (25ft)		9.0m (30ft)		10.5m (35ft)		12m (40ft)		13.5m (45ft)		15.0m (50ft)		Capacity	Reach		
																m (ft)		
12.0 m (40ft)	kg														*1790	*1790	15.27	
	lb														*3950	*3950	(50.1)	
9.0 m (30ft)	kg												*1520	*1520	*1860	1660	16.89	
	lb												*3350	*3350	*4100	3660	(55.4)	
6.0 m (20ft)	kg										*2030	*2030	*2010	*2010	*1970	1360	17.83	
	lb										*4480	*4480	*4430	*4430	*4340	3000	(58.5)	
3.0 m (10ft)	kg				*3260	*3260	*2880	*2880	*2610	*2610	*2420	2370	*2290	1900	*2110	1200	18.20	
	lb				*7190	*7190	*6350	*6350	*5750	*5750	*5340	5220	*5050	4190	*4650	2650	(59.7)	
Ground Line	kg	*7310	7070	*5460	5240	*4370	4050	*3670	3210	*3190	2580	*2860	2090	*2610	1700	2150	1150	18.04
	lb	*16120	15590	*12040	11550	*9630	8930	*8090	7080	*7030	5690	*6310	4610	*5750	3750	4740	2540	(59.2)
-3.0 m (-10ft)	kg	*8680	6170	*6550	4540	*5210	3520	*4320	2810	*3690	2280	*3230	1870	2810	1540	2250	1200	17.33
	lb	*19140	13600	*14440	10010	*11490	7760	*9520	6190	*8140	5030	*7120	4120	6190	3400	4960	2650	(56.9)
-6.0 m (-20ft)	kg	*9060	5980	*7000	4310	*5630	3310	4640	2630	3820	2140	3210	1780	*2720	1500	2560	1400	15.99
	lb	*19970	13180	*15430	9500	*12410	7300	10230	5800	8420	4720	7080	3920	*6000	3310	5640	3090	(52.5)
-9.0 m (-30ft)	kg	*8600	6190	*6780	4410	*5520	3360	*4590	2670	*3860	2190					*3070	1880	13.83
	lb	*18960	13650	*14950	9720	*12170	7410	*10120	5890	*8510	4830					*6770	4140	(45.4)
-12.0 m (-40ft)	kg	*7010	6760	*5590	4830	*4510	3710											
	lb	*15450	14900	*12320	10650	*9940	8180											

Note

1. Lifting capacity are based on SAE J1097and ISO 10567.

2. Lifting capacity of the ROBEX series does not exceed 75% of tipping load with the machine on firm, level ground or 87% of full hydraulic capacity.

3. The load point is a hook located on the back of the bucket.

4. (\*) indicates load limited by hydraulic capacity.



**HYUNDAI**  
HEAVY INDUSTRIES CO.,LTD.  
CONSTRUCTION EQUIPMENT

Head Office  
1000 BANGEOJINSUNHWAN-DORO, DONG-GU,  
ULSAN, 862-792, KOREA  
TEL : (82)52-202-9807 / FAX : (82)52-202-7720

Please Contact

www.hyundai-ce.com

2012.06 Rev.0

